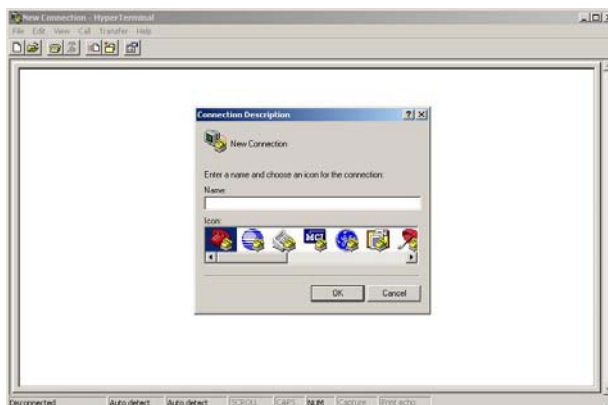


“LanConBOX” configuration manual

How to connect to device...

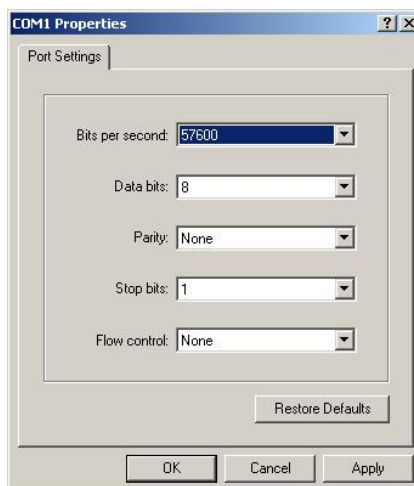
1. Open „HyperTerminal“ program. You can find it in: Start -> Programs -> Accessories -> Communications -> „HyperTerminal“;
2. When the program will execute, You have to enter Name (any name) of connection and press “OK”;



3. After that, in “Connect using:” field choose : COM1, and press “OK”



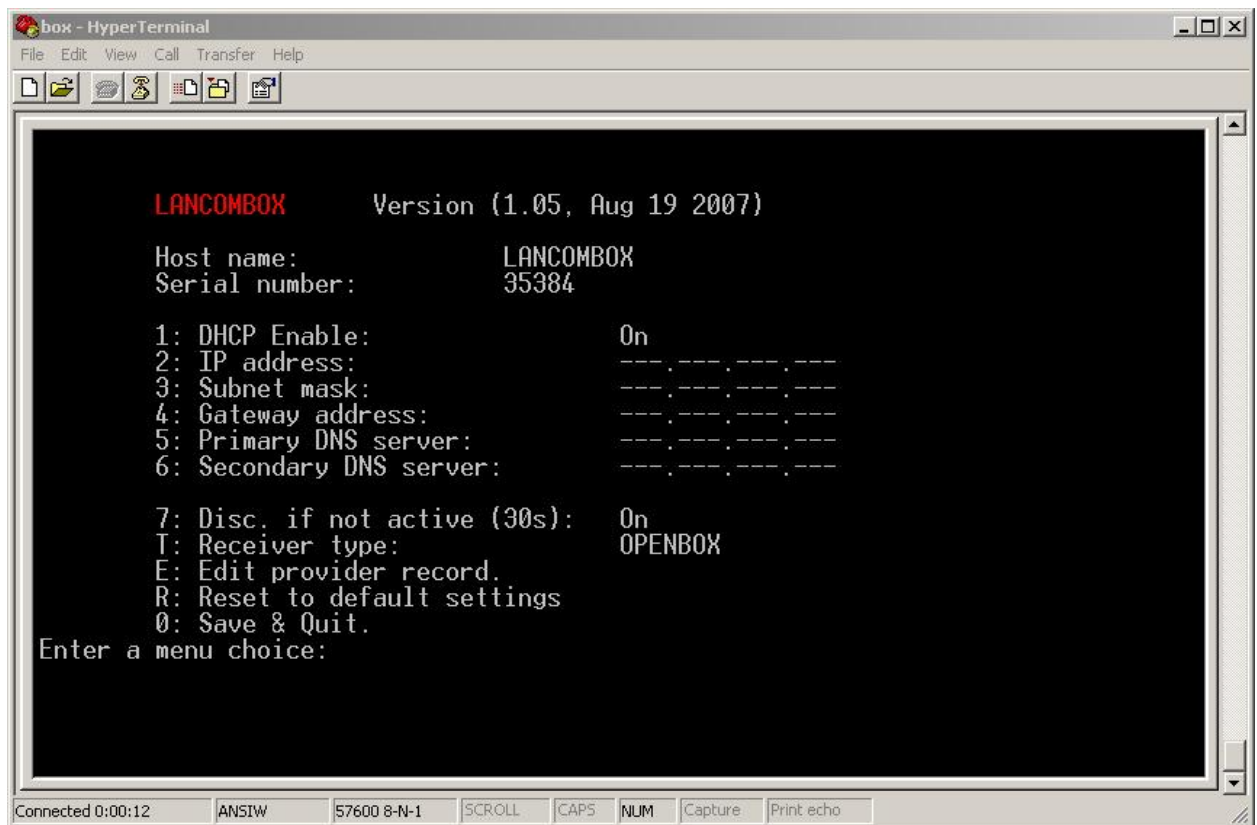
4. In port settings, choose “Bits per second” – 57600, and “Flow control” must be set to “None” , then press “OK”.



5. After above mentioned steps the program is ready to work. Connect “LanComBOX” to COM port and prepare to connect it to power supply. When the power source is connected to device,

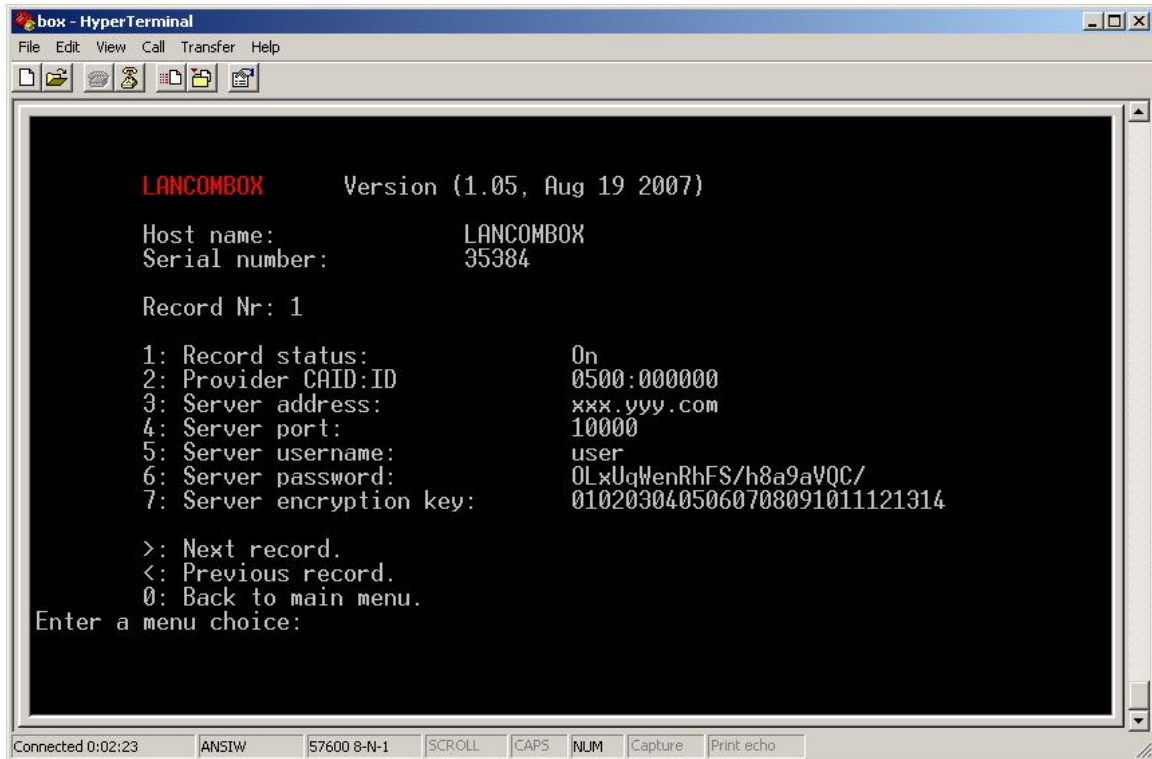
during 5 seconds interval (and the program is in active mode), press “.”(period) on keyboard.
The menu will apper, if not, try to do those steps again.

6. If the connection is successfull You will see this:



Settings

- 1) 1: DHCP Enable: On – DHCP service. If turned „On“, it will retrieve IP and other settings automatically (router must be configured correctly). In other case, if DHCP is not working, turn it „Off“ by pressing „1“ and enter the correct IP information in corresponding fields:
 - IP address (e.g. 192.168.1.2),
 - Subnet mask (e.g.. 255.255.255.0),
 - Gateway address (e.g. 192.168.1.1),
 - Primary ir Secondary DNS server (e.g. 212.59.0.3, depends on Your ISP).
Default is „On“;
- 2) 7: Disc. If not active (30s): On – it will disconnect from server automtically in 30 seconds if not in use. Default is „On“;
- 3) T: Receiver type: OPENBOX – receiver type.
- 4) E: Edit provider record. – The second level menu in where you can edit provider data. When pressed, You will see this:



- 1: Record status: On – provider record status On/Off.
 - 2: Provider CAID:ID – enter CAID:ID **without** „:“, e.g add 0500020710 for NTV+ and press <Enter> (in configuration view You will see 0500:020710).
 - 3: Server address – enter server address by hostname or IP. (e.g. www.zzzz.com or 192.168.1.2)
 - 4: Server port – port number, e.g. 10000.
 - 5: Server username – username cannot be longer than 16 characters. Username is case sensitive.
 - 6: Server password – password cannot be longer than 16 characters. Password is case sensitive. **Attention:** enter password directly (don't need to encrypt it with update program anymore), after pressing <Enter> You will see: "Password encrypting, please wait 5 sec.". Password will encrypt automatically.
 - Server encryption key – leave this setting untouched, or change it only if required.
 - Jump forward or back to other record menu by pressing „<“ or „>“ .
 - Press „0“ (zero) to return to main menu.
7. R: Reset to default settings – resets all settings to factory default. It will destroy data that was entered.

To finish configuration press „0“ (zero) and entered data will be saved and You will exit from configuration.

If all entered data is correct, the device is ready to use.

Attention! Connecting device to Openbox receiver, don't forget to set communication port speed to **57600**, and in „Service searching“ menu near satellite configuration turn **0/12V= ON**.